

Directions to the office of Handicap International in Munich

In the following instructions you will find detailed directions to our office. The first section refers to your journey from MUC airport.

From page 6 onwards you will find directions from the main railway station. If you have any questions about accessibility or public transport tickets, please contact the following number 089 54 76 06 0

From the airport MUC to Handicap International e.V. at Lindwurmstraße 101, 80337 München, 4th floor

The Handicap International office is one hour's journey from MUC airport. The following link takes you to the airport website and provides information on barrier-free travelling:

[Flughafen MUC barrierefrei](#)

You can travel by S-Bahn and U-Bahn. The route is described below.

Journey by S-Bahn and U-Bahn:

At the airport, escalators and lifts will take you to the station for S-Bahn lines S1 and S8 in the basement below Terminal 2. You can choose either line.

The following link takes you to the website of the Munich Transport Authority and provides information on barrier-free travelling: <https://www.mvg.de/ueber-die-mvg/unser-engagement/barrierefreiheit.html>

Take the S8 towards Herrsching from platform 2 (38 min) or the S1 towards Leuchtenbergring from platform 1 (49 min) to Marienplatz station. If you take the S1, please get off on the left at Marienplatz to reach the lift.

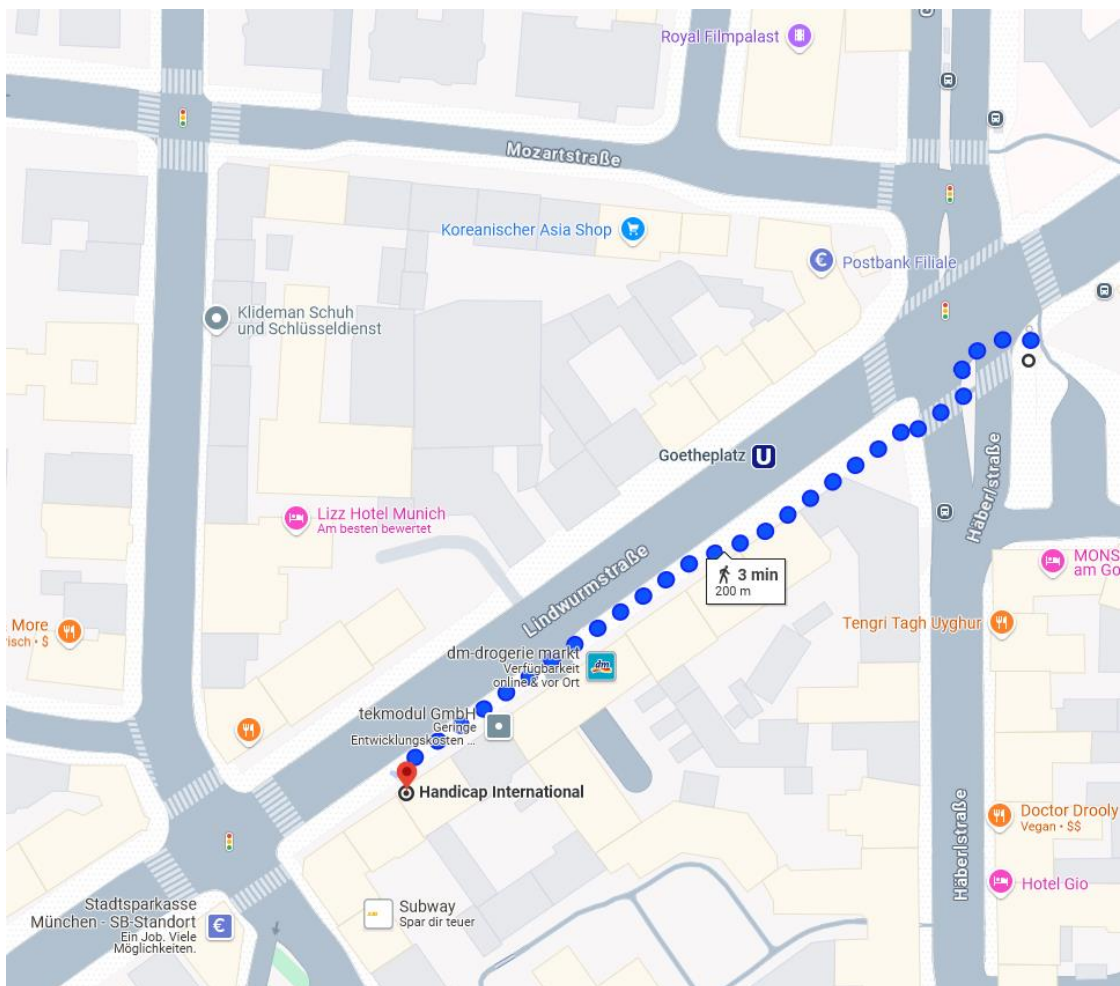
At Marienplatz station, lifts will take you to the U3/U6 platform. From platform 2, take the U3 towards Fürstenried West or the U6 towards Harras or Klinikum Großhadern. All trains on platform 2 will take you to Goetheplatz station (one stop).

If you need a lift, get off at Goetheplatz station against the direction of travel. **If you do not need a lift, please continue reading from page 4.**



The lift is left of the stairs

On the surface, cross Häberlsstraße at the junction and follow Lindwurmstraße for 200 metres to number 101.



Route from lift to office at Lindwurmstraße 101

The entrance to Handicap International at Lindwurmstraße 101 is located between Vinzenz Murr and the medical centre (“Ärztehaus”).



The entrance of Lindwurmstraße 101

The lift is on the right in the entrance area, the staircase is behind it.



The lift and stairs are located on the right in the entrance area.

Our office is on the 4th floor. The entrance door is opposite the lift. There is a bell on the left-hand side next to the door.

If you do not need a lift, get off at Goetheplatz station in the direction of travel. Follow the signs to Kapuzinerstraße exit F:

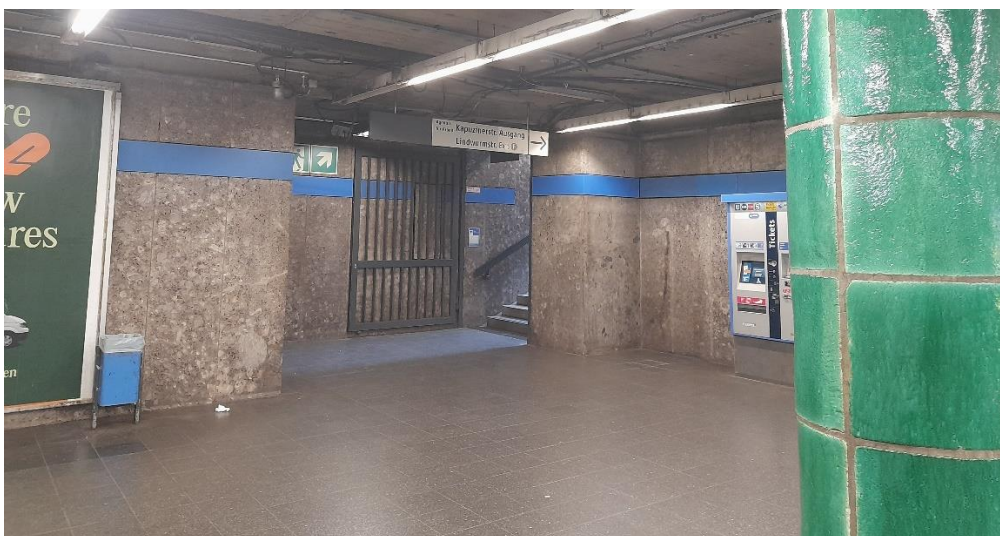


Signposting Kapuzinerstraße Exit F

Two flights of stairs take you to exit F:



Staircase and escalator from the Goetheplatz platform to the closed floor



Exit F in the direction of Kapuzinerstraße

You come to the surface just before the entrance to Handicap International at Lindwurmstraße 101. It is located between Vinzenz Murr and the medical centre ("Ärztehaus").



Entrance Handicap International, Lindwurmstraße 101

The lift is on the right in the entrance area, the staircase is behind it. Our office is on the 4th floor.



Lift and stairs are on the right in the entrance area.

The entrance door to our office is opposite the lift. There is a bell on the left-hand side next to the door.

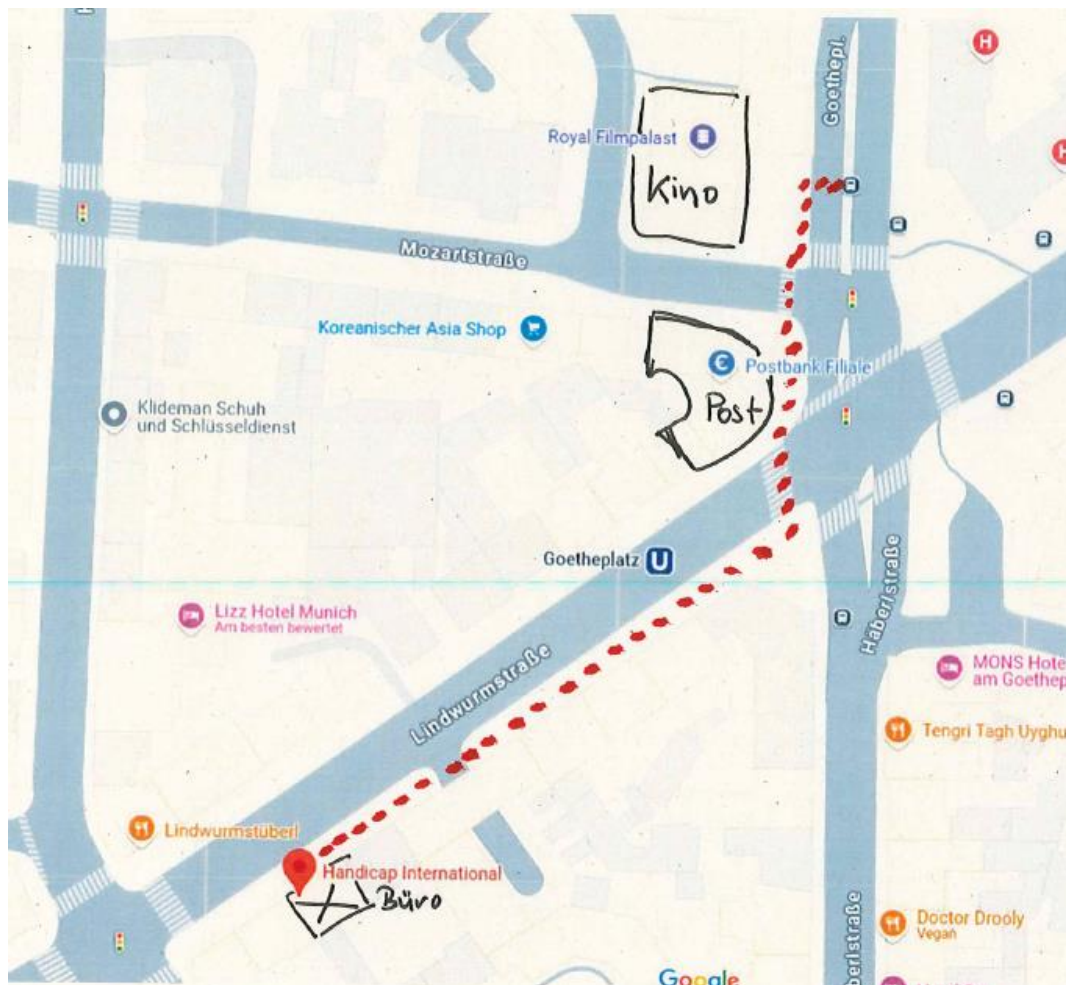
Munich Central Station to Handicap International e.V. Lindwurmstraße 101, 80337 Munich, 4th floor

The Handicap International office is about 15 minutes' journey from the main railway station. The following link will take you to the website of the Munich transport company and provides information on barrier-free travelling: <https://www.mvg.de/ueber-die-mvg/unser-engagement/barrierefreiheit.html>

Travel by bus:

Follow the signs to the bus stop 'Hauptbahnhof Süd' in Bayerstraße. Bus number 62 in the direction of Hauptbahnhof Nord will take you to the Goetheplatz stop (4 stops). The journey takes 6 minutes.

After getting off the bus at the traffic island, turn towards the cinema theatre "Royal", cross the road, turn left and cross Mozartstraße towards the post office. After passing the post office, cross Lindwurmstraße at the traffic lights and turn right. Follow Lindwurmstraße for 200 metres to reach our office.



Route from the Goetheplatz bus stop to the office

The entrance to Handicap International at Lindwurmstraße 101 is located between Vinzenz Murr and the medical centre (“Ärztehaus”).



The lift is on the right in the entrance area, the staircase is behind it. Our office is on the 4th floor.



The entrance door to our office is opposite the lift. There is a bell on the left-hand side next to the door.